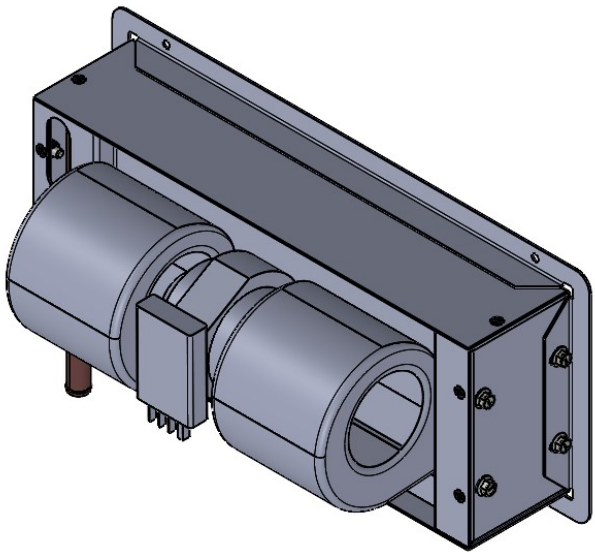
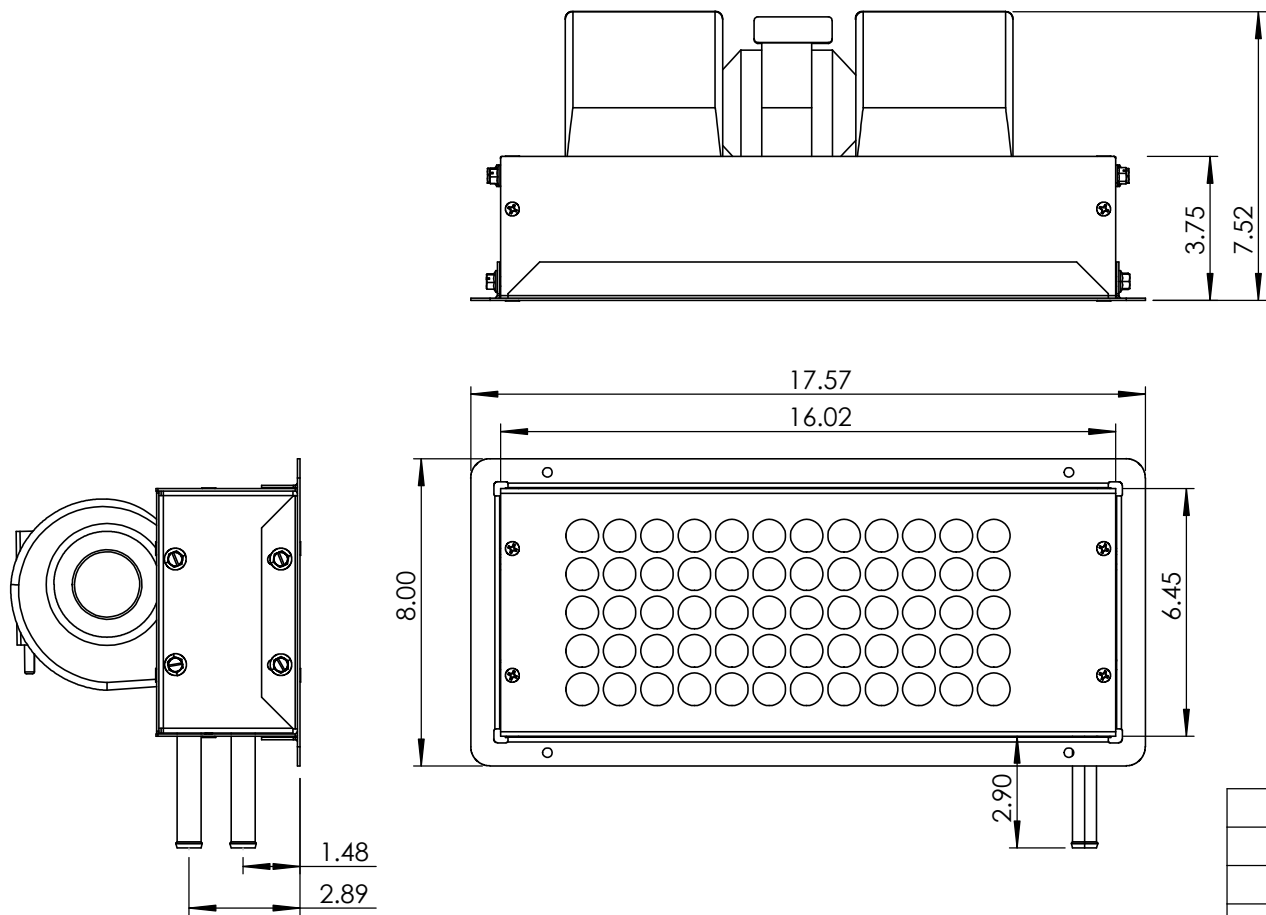


UNIT DIMENSIONS / SPECIFICATIONS



SPECIFICATIONS	
CAPACITY	35,000 BTU
AIRFLOW	430 CFM
VOLTAGE	13.6 VDC
AMPERAGE	16 A
BLOWER SPEEDS	3
FINISH	BLACK POWDERCOAT


REVISIONS				
REV.	ECO	DESCRIPTION	DATE	APPR.
B	00048	BF-286 FOAM WAS BF-118	08/28/24	JY

HOSE LENGTH TOLERANCE	
UP TO 12" INCLUSIVE	± .13
OVER 12" TO 18"	± .19
OVER 18" TO 36"	± .25
OVER 36"	± 1% NEAREST .12

PROPRIETARY AND CONFIDENTIAL

THE INFORMATION CONTAINED IN THIS DRAWING IS THE SOLE PROPERTY OF BADGER TRUCK REFRIGERATION. ANY REPRODUCTION IN PART OR AS A WHOLE WITHOUT WRITTEN PERMISSION IS PROHIBITED.

MATERIAL	
FINISH	
DO NOT SCALE DRAWING	



UNLESS OTHERWISE SPECIFIED:  
DIMENSIONS ARE IN INCHES  
TOLERANCES:  
ANGULAR: ±1  
TWO PLACE DECIMAL ±.03  
THREE PLACE DECIMAL ±.010

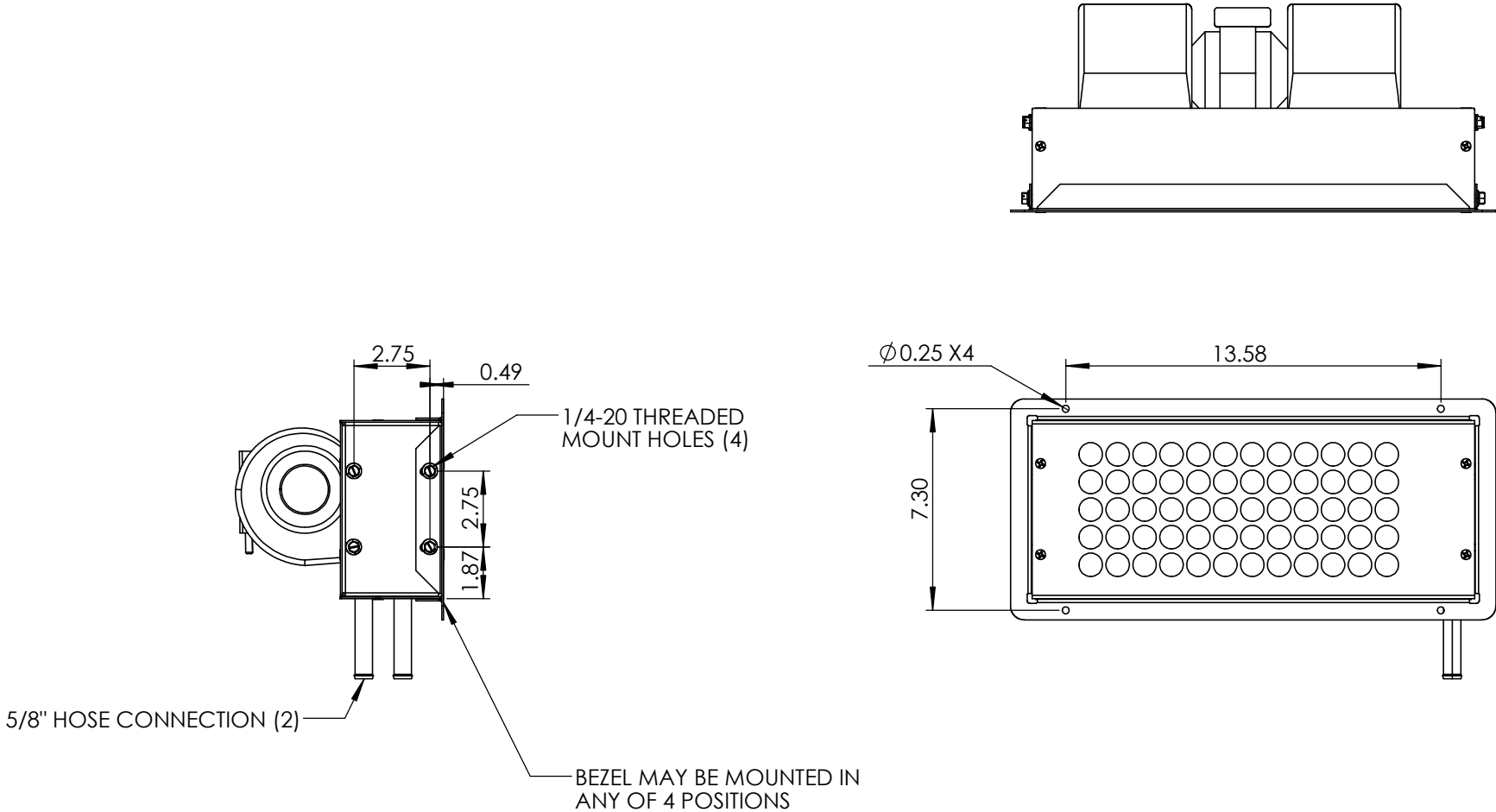
DRAWN	JY	DATE	12/04/23
CHECKED			

**BADGER TRUCK REFRIGERATION**  
6302 TEXACO DRIVE EAU CLAIRE WI 54703  
(715) 874-6811

TITLE: **12V HEATER BOTTOM EXIT W/MOUNTING BEZEL**

SIZE	DWG. NO.	REV
<b>A</b>	BU-1000-8-12	<b>B</b>
SCALE: 1:5		SHEET 1 OF 4

CONNECTIONS / MOUNTING



HOSE LENGTH TOLERANCE

UP TO 12" INCLUSIVE	± .13
OVER 12" TO 18"	± .19
OVER 18" TO 36"	± .25
OVER 36"	± 1% NEAREST .12

PROPRIETARY AND CONFIDENTIAL

THE INFORMATION CONTAINED IN THIS DRAWING IS THE SOLE PROPERTY OF BADGER TRUCK REFRIGERATION. ANY REPRODUCTION IN PART OR AS A WHOLE WITHOUT WRITTEN PERMISSION IS PROHIBITED.

MATERIAL	
FINISH	

DO NOT SCALE DRAWING



UNLESS OTHERWISE SPECIFIED:  
DIMENSIONS ARE IN INCHES  
TOLERANCES:  
ANGULAR: ±1  
TWO PLACE DECIMAL ±.03  
THREE PLACE DECIMAL ±.010

NAME	DATE
JY	12/04/23

CHECKED

BADGER TRUCK REFRIGERATION

6302 TEXACO DRIVE EAU CLAIRE WI 54703

(715) 874-6811

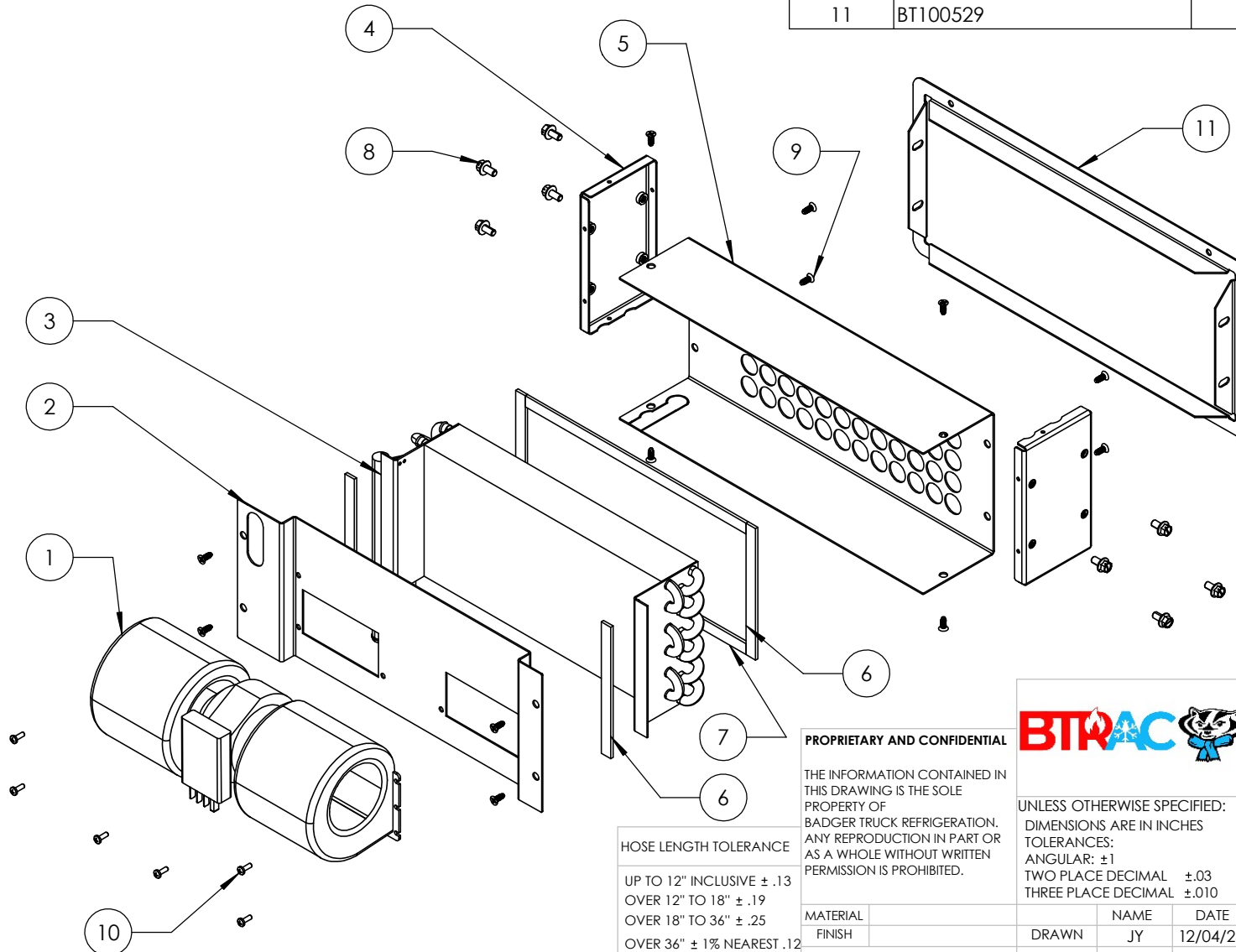
TITLE: 12V HEATER BOTTOM  
EXIT W/MOUNTING  
BEZEL

SIZE	DWG. NO.	REV
A	BU-1000-8-12	B

SCALE: 1:6 SHEET 2 OF 4

# SERVICE PARTS DIAGRAM

ITEM NO.	PART NUMBER	DESCRIPTION	QTY.
1	BT3-0600	12V BLOWER ASSY	1
2	BT100526	HEATER BLOWER PLATE	1
3	BT6-1450	HEATER CORE BOTTOM EXIT	1
4	BT100525	HEATER HOUSING SIDE PANEL	2
5	BT100524	HEATER FRONT HOUSING	1
6	BF-286 6.0	FOAM 6.0 x 0.5 x 0.125	4
7	BF-286 11.625	FOAM 11.625 x 0.5 x 0.125	2
8	0210	BOLT 1/4-20X1/2 SPINLOCK	8
9	1122500	#10-24x1/2" FLAT U/C BLACK OXIDE	12
10	1191202	M4-0.7X12MM	6
11	BT100529	HEATER MOUNTING BEZEL	1



## HOSE LENGTH TOLERANCE

UP TO 12" INCLUSIVE  $\pm .13$   
OVER 12" TO 18"  $\pm .19$   
OVER 18" TO 36"  $\pm .25$   
OVER 36"  $\pm 1\%$  NEAREST .12

## PROPRIETARY AND CONFIDENTIAL

THE INFORMATION CONTAINED IN THIS DRAWING IS THE SOLE PROPERTY OF BADGER TRUCK REFRIGERATION. ANY REPRODUCTION IN PART OR AS A WHOLE WITHOUT WRITTEN PERMISSION IS PROHIBITED.

MATERIAL  
FINISH

DO NOT SCALE DRAWING



UNLESS OTHERWISE SPECIFIED:  
DIMENSIONS ARE IN INCHES  
TOLERANCES:  
ANGULAR:  $\pm 1$   
TWO PLACE DECIMAL  $\pm .03$   
THREE PLACE DECIMAL  $\pm .010$

DRAWN  
JY

NAME  
JY

DATE  
12/04/23

## BADGER TRUCK REFRIGERATION

6302 TEXACO DRIVE EAU CLAIRE WI 54703

(715) 874-6811

TITLE: 12V HEATER BOTTOM  
EXIT W/MOUNTING  
BEZEL

SIZE DWG. NO.

A

BU-1000-8-12

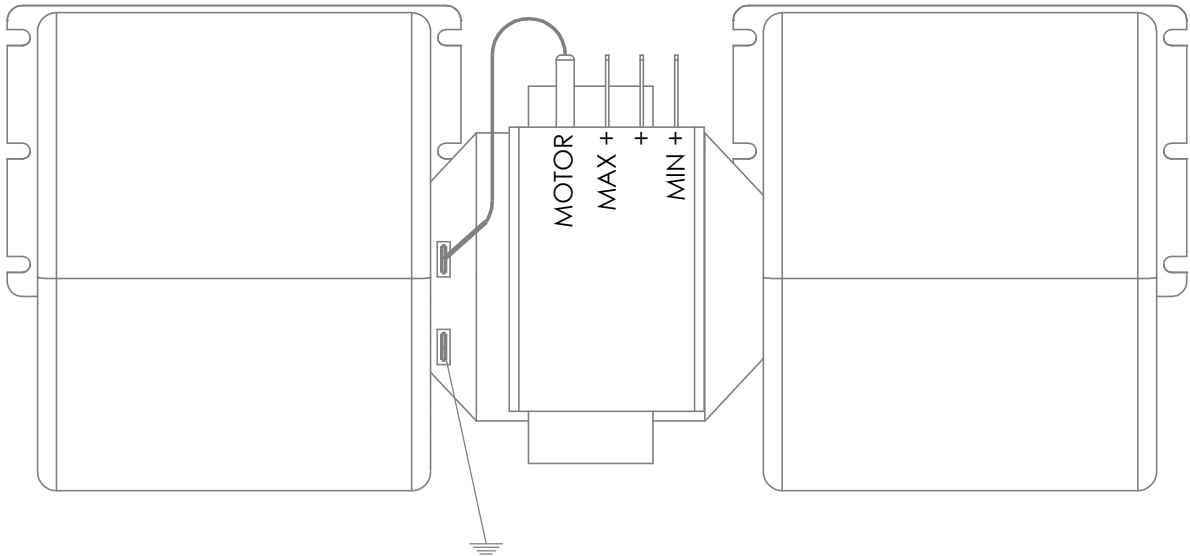
REV

B

SCALE: 1:6

SHEET 3 OF 4

WIRING INFORMATION



HOSE LENGTH TOLERANCE	
UP TO 12" INCLUSIVE	± .13
OVER 12" TO 18"	± .19
OVER 18" TO 36"	± .25
OVER 36"	± 1% NEAREST .12

PROPRIETARY AND CONFIDENTIAL

THE INFORMATION CONTAINED IN THIS DRAWING IS THE SOLE PROPERTY OF BADGER TRUCK REFRIGERATION. ANY REPRODUCTION IN PART OR AS A WHOLE WITHOUT WRITTEN PERMISSION IS PROHIBITED.

MATERIAL	
FINISH	

DO NOT SCALE DRAWING



UNLESS OTHERWISE SPECIFIED:  
DIMENSIONS ARE IN INCHES  
TOLERANCES:  
ANGULAR: ±1  
TWO PLACE DECIMAL ±.03  
THREE PLACE DECIMAL ±.010

DRAWN	JY	DATE	12/04/23
-------	----	------	----------

CHECKED

**BADGER TRUCK REFRIGERATION**  
6302 TEXACO DRIVE EAU CLAIRE WI 54703  
(715) 874-6811

TITLE: 12V HEATER BOTTOM  
EXIT W/MOUNTING  
BEZEL

SIZE	DWG. NO.	REV
A	BU-1000-8-12	B